

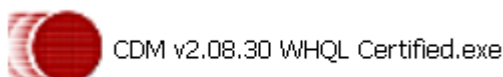
DRIVERS USB

Automatic instalation has to be carry out before connecting the USB cable to the PC

Figure out the windows version you have installed (32 or 64 bits): right click on My PC, Properties.

If you have Win 8.1 you must install drivers manually (see below).



Browse the CD and localize the folder "Drivers Windows Auto-Inst" 32 or 63 bits according to you system. Open it and double-click on the file "CDM_XXXX _Setup.exe".



Then "Extract" and then "Next" till the end of the process.

Now connect the USB cable to the PC and wait.

When the installation is completed you need to check for the COM port used by the cable to be sure the software is able to communicate with the ECU. The software should use only port 1 to 8. To figure out which COM port has been assigned to the cable, open the Windows Devices Administrator:

- WinXP: Start, Control Panel, System, Hardware, Devices Administrator
- Winvista, 7 And 8: Start , Start, Control Panel, System and Security, System, Devices Administrator.
-  If an administrator password is asked or any confirmation, write the password and confirm.

Unfold "COM & LPT Ports", and look for "USB Serial Port COM--"



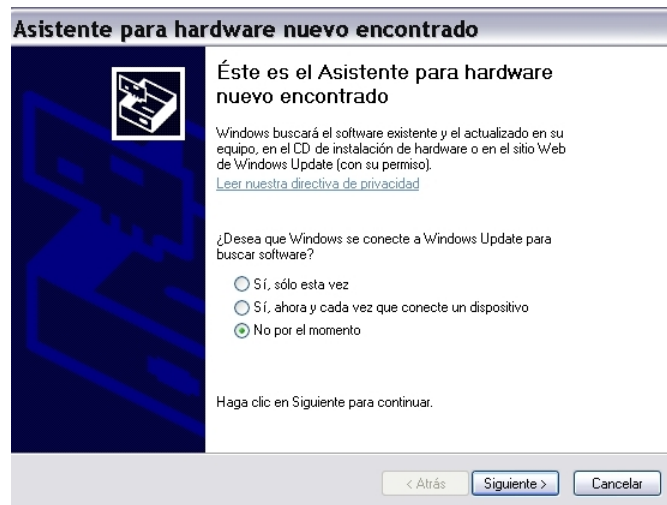
If the COM port number is higher than 8, it must be changed. To do that, open the advanced options and change it. You can choose any port number from 1 to 8, even if it is busy.

Then, configure manually the software to use the same COM port you chose before:

- YEC: "Tool, COM"
- Yoshimura: "Set, Communication"
- HRC: "CommPort"
- Kawasaki: "Set, RS232C"

Manual drivers installation

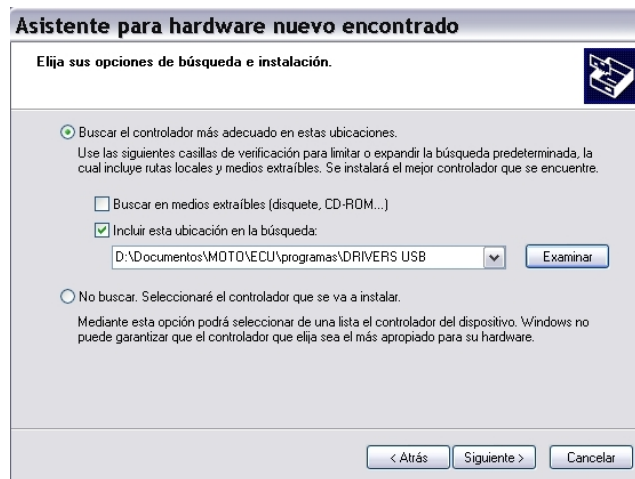
Figure out the windows version you have installed (32 or 64 bits): right click on My PC, Properties.
Plug the USB cable to the PC, “New Hardware Found” message will appear. If it asks for Window Update, select No.



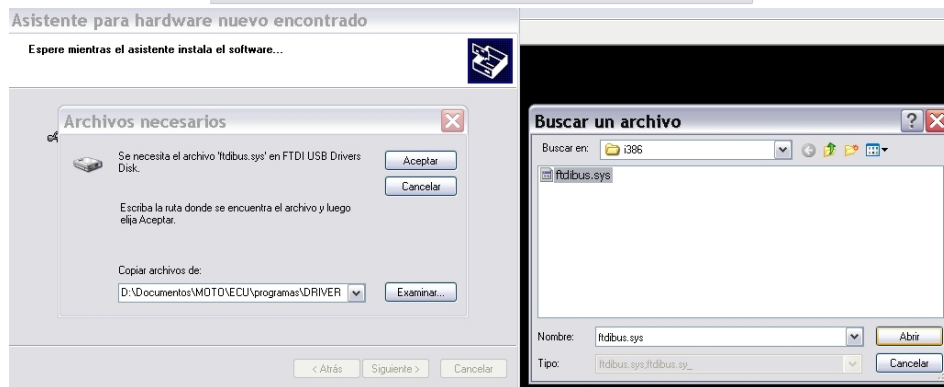
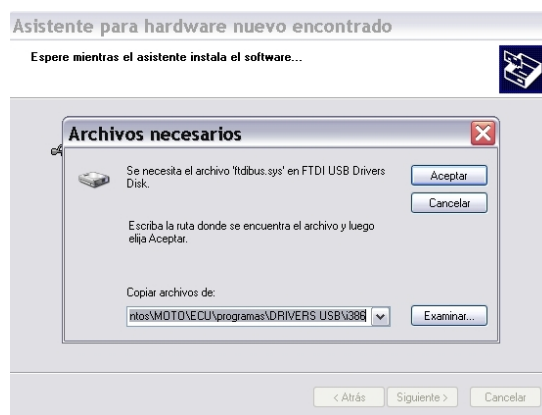
In the next message select the advanced option “install from a specific folder”.



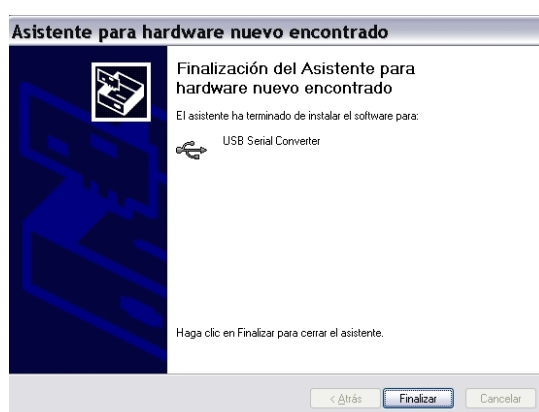
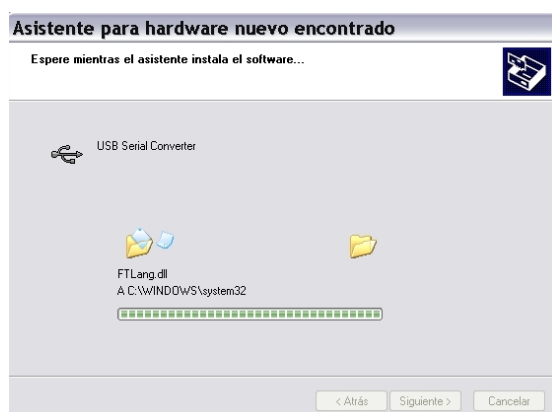
In the next step select the box to include the folder where the drivers are, and browse into the CD to localize “Drivers Windows Inst-manual”.



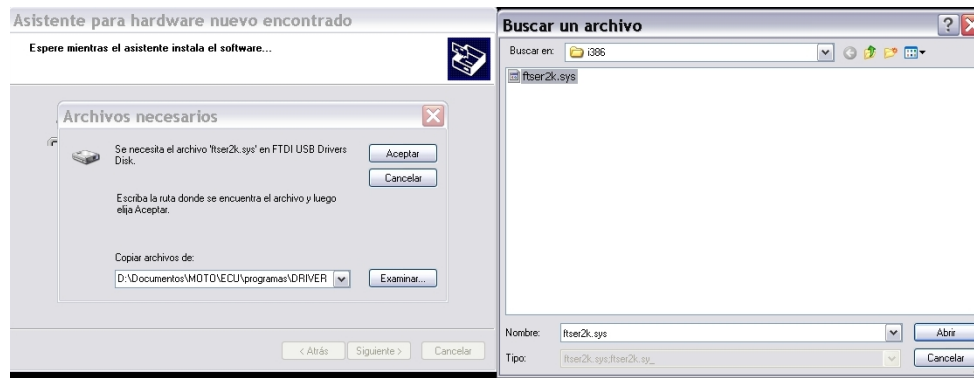
Depending on the cpu (AMD or Intel) the right drivers will be in the i386 or AMD64 folder. Select the right folder and click on next.



Drivers will start to install. When the first step is finished click on Finish.



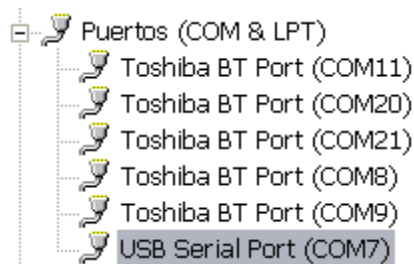
Now Windows will detect a new hardware again for the serial port. Follow the same steps as before.



When the installation is completed you need to check for the COM port used by the cable to be sure the software is able to communicate with the ECU. The software should use only port 1 to 8. To figure out which COM port has been assigned to the cable, open the Windows Devices Administrator:

- WinXP: Start, Control Panel, System, Hardware, Devices Administrator
- Winvista, 7 And 8: Start, Start, Control Panel, System and Security, System, Devices Administrator.
- If an administrator password is asked or any confirmation, write the password and confirm.

Unfold “COM & LPT Ports”, and look for “USB Serial Port COM--”



If the COM port number is higher than 8, it must be changed. To do that, open the advanced options and change it. You can choose any port number from 1 to 8, even if it is busy.

Then, configure manually the software to use the same COM port you chose before:

- YEC: “Tool, COM”
- Yoshimura: “Set, Comunicación”
- HRC: “CommPort”
- Kawasaki: “Set, RS232C”